

URU800 series

8,070 kg
LIFTING CAPACITY

APPROX. **17.5 m**
MAX. HOOK HEIGHT
ABOVE GROUND

**RADIO
REMOTE
CONTROL**

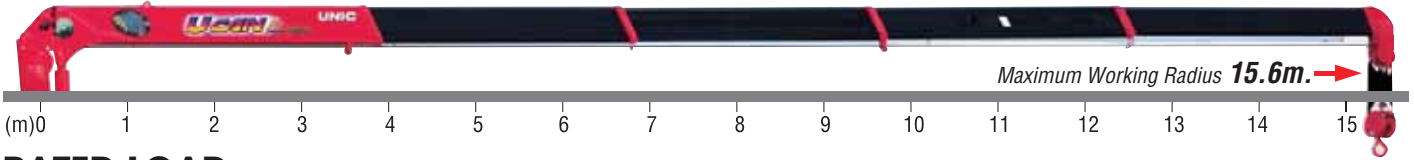


SPECIFICATIONS

CRANE MODEL		URU805
Max lifting capacity		8,200kg at 2.5m
Max working radius		15.6m
Max hook height (approx.)	Above ground	17.5m
	Below ground	17.7m with 6-part line
Boom length		Min 4.4m to Max 15.9m
Boom sections		5-section box beam type telescoping boom
Boom raise angle		1° to 80°
Slewing angle		360° continuous
Winch	Single line pull	1,640kg 13.1kN {1333kgf}
	Wire rope	Construction: IWRC 6 x WS(29) GRADE B / Diameter x Length: 9mm x 129m / Breaking strength: 68.6kN {7000kgf}
Outriggers		Vertical jacks, double acting hydraulic cylinders with pilot-operated check valves / Horizontal beams, manual extension type
		Retracted: 2.26m, Extended: 5.1m
Hydraulic pump	Rated pressure	20.6MPa {210kgf/cm ² }
Hydraulic oil tank capacity		90L
Safety devices		Pressure relief valve for hydraulic circuit / Counterbalance valves for boom raising and boom telescoping cylinders / Pilot-operated check valves for vertical outrigger cylinders / Boom angle indicator with load indicator / Hook safety latch / Automatic mechanical brake for winch / Digital load meter / Automatic stop for overwinding / Overwinding alarm / Alarm buzzer / Level / Emergency stop button / Overloading alarm / Turnover protection

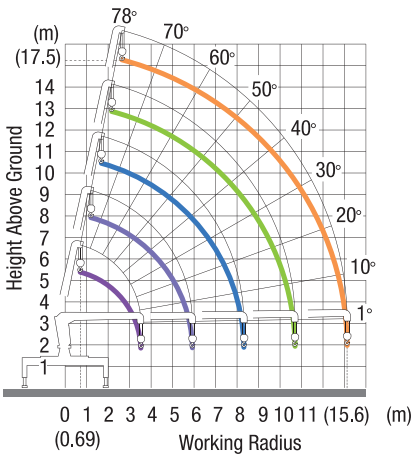
5 Sections Boom

URU-805-AU



RATED LOAD

Working Radius	2.0	2.5	2.7	3.0	3.5	4.0	4.5	5.0	5.5	6.0	7.0	8.0	9.0	10.0	11.0	12.0	13.0	14.0	15.0	15.6	
	8.07	8.07	7.07	6.07	5.17	4.47 (4.10m)															
	6.07	6.07	6.07	6.07	5.17	4.57	4.12	3.67	3.32	2.97	2.37										
		3.07	3.07	3.07	3.07	3.07	3.07	3.07	3.07	2.87	2.37	1.97	1.72	1.57 (10.1m)							
				2.67	2.67	2.67	2.67	2.67	2.67	2.67	2.12	1.72	1.52	1.32	1.17	1.02	0.92 (12.7m)				
					2.07	2.07	2.07	2.07	2.07	2.07	1.97	1.72	1.52	1.32	1.17	1.02	0.87	0.77	0.67	0.57	



CRANE MOUNTING DIMENSIONS

CRANE MODEL	1	2	3	4
URU-805-AU	4,525	Min. 4,400 ~ Mid. 7,300 ~ 10,200 ~ 13,000 ~ Max. 15,900	2,424	2,458

