

URW-506 (3.0t x 3.4m)

URW-506-1 (4.0t x 2.5m)

MINI SPIDER CRANE

- Total width 1.4m
- Max working radius 15.52m
- Diesel powered and optional mains electric
- Zero length increase with electric option
- Operator control of outrigger extension
- Intelligent voice warning system
- Radio remote control as standard
- Working area limitation
- Slew limitation (optional)
- Intelligent throttle activation for economy and ecology

Capacity 3.0t x 3.4m

Max Boom Length 15.71m

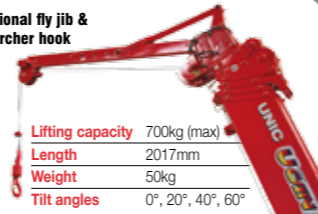
Max Lifting Height 16m

Weight 4840 - 4990kg



Safe load indicator

Optional fly jib & searcher hook



Lifting capacity 700kg (max)
 Length 2017mm
 Weight 50kg
 Tilt angles 0°, 20°, 40°, 60°



The URW-506 offers an optimal combination of working flexibility and heavy lifting power. This crane is capable of lifting 3 tonnes at 3.4m or up to 4 tonnes with an optional 5 fall hook block. As with all the UNIC spider crane models carrying a safe load indicator, the URW-506's working area limitation device allows the operator to pre-define the working area giving greater control and safety in sensitive areas. On approaching these limits, function speeds are reduced and an audible alarm is given before operation stops.

REMOTES



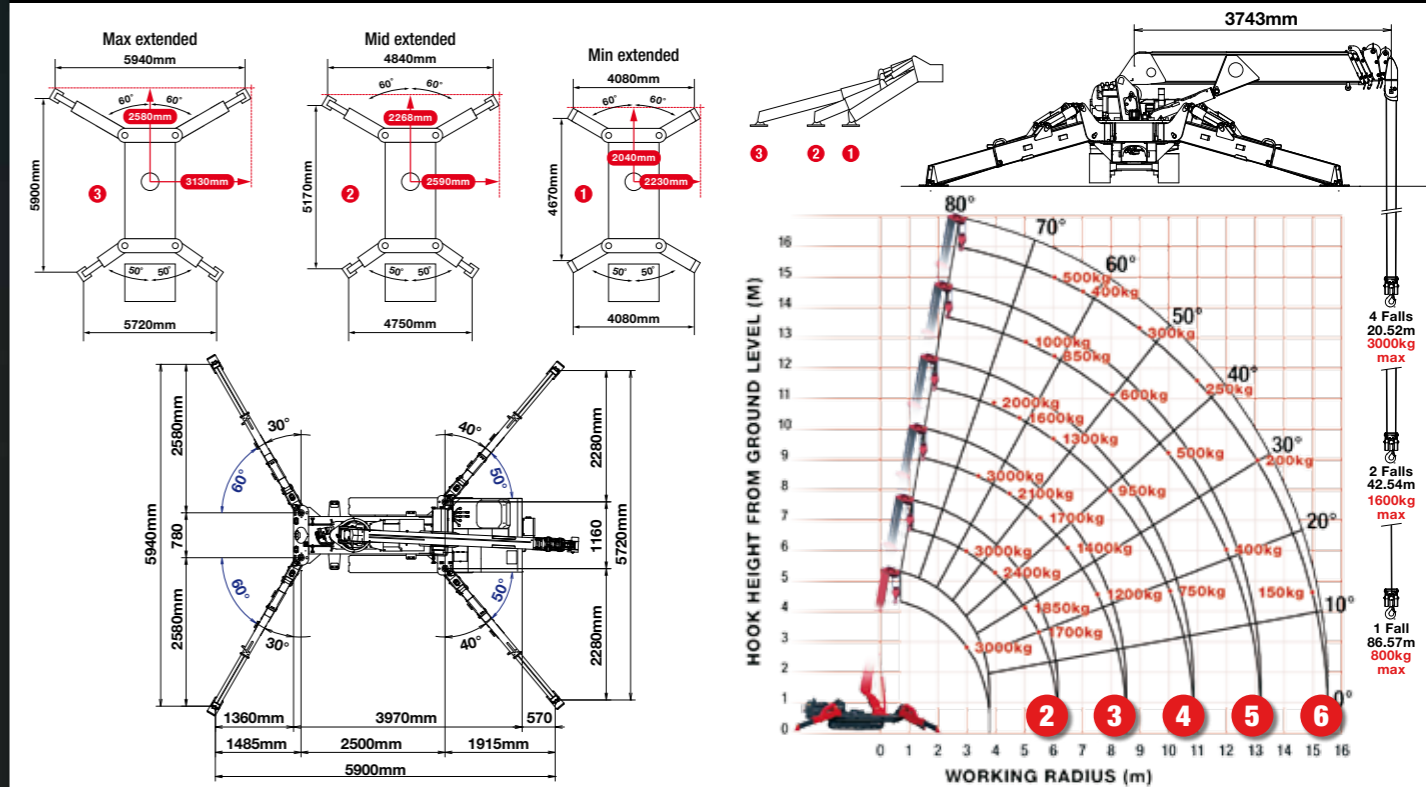
Standard radio remote control

Optional radio remote control with digital feedback

CRANE SPECIFICATIONS

Crane capacity	capacity:	3.0t x 3.4m (506-1 4.0t x 2.5m with 5 fall hook block)
Max working radius	max:	15.52m
Max lifting height	approx:	16m (17.79m with fly jib, 18.46m with fixed hook)
Rope length	max:	20.52m (4 fall), 42.54m (2 fall), 86.57m (1 fall)
Dimensions	folded:	4870mm (l) x 1400mm (w) x 2035mm (h)
Weight	unladen:	4840kg (4990kg with electric option)
Point loadings	Due to the many variables involved, point loadings are only available on request	
Hook speed	approx:	17m/min (with 4 layers and 4 falls)
Telescopic system	boom length:	3.93 - 15.71m
	telescoping speed:	11.78m/35 seconds
	boom type:	6 section hydraulically telescoping boom, hexagonal box construction
Derricking angle/speed	approx:	0 - 80°/18.0 seconds
Stewing angle/speed	approx:	360° (continuous) 2.5min rpm
Traction system	drive:	hydrostatic 2-speed, stepless forward and reverse
	travel speed:	0 - 3km/h
	gradeability:	± 20° (vertical) 20° (traverse)
	track ground length:	1750mm
	track ground pressure:	45.1kPa (0.46kg/cm ²)
	track width:	300mm
Engine	manufacturer:	Mitsubishi / Yanmar
	fuel:	diesel (electric dual power option)
	maximum output:	18kW (24.5PS) / 2100min rpm
	starting method:	electric
	tank capacity:	40 litres
Electric motor	power:	7.5kW
	voltage:	400v AC 50/60Hz
Standard equipment	computer controlled moment limiter (safe load indicator), radio remote control, overwinding alarm, computer controlled intelligent voice warning system, multi-function operation by radio remote control, intelligent throttle activation, automatic hook stow, overload warning alarms, overload warning lamps, working area limitation	
Optional equipment	1 fall hook block, 2 fall hook block, 5 fall hook block (URW-506-1), mains electric dual power (400v), low marking tracks, slew limitation, searcher hook small 500kg, searcher hook 700kg, fly jib 700kg with single part line, radio remote control with feedback display, data logging	

RATED LOADS & OUTRIGGER POSITIONS



SECOND STAGE EXTENDED 3.93 - 6.33M BOOM LENGTH

Working radius	m	up to 2.5	3.0	3.4	4.0	4.5	5.0	5.5	6.0	
Outrigger	Max-extended	kg	3,000 (4,000)	3,000 (3,350)	3,000	2,400	2,100	1,850	1,700	1,550
	Mid-extended	kg	3,000 (4,000)	3,000 (3,350)	3,000	2,400	2,100	1,850	1,700	1,400
	Min-extended	kg	3,000 (4,000)	3,000 (3,350)	3,000	2,400	2,000	1,650	1,350	1,100

* Loads shown in blue are applicable for the 5 fall hook block URW-506-1 only. All other loads shown in black apply to both the standard URW-506 and the URW-506-1.

THIRD STAGE EXTENDED 6.33 - 8.72M BOOM LENGTH

Working radius	m	up to 3.0	3.4	4.0	4.5	5.0	5.5	6.0	6.5	7.0	7.5	8.53	
Outrigger	Max-extended	kg	3,000	3,000	2,400	2,100	1,850	1,700	1,550	1,400	1,300	1,200	1,000
	Mid-extended	kg	3,000	3,000	2,400	2,100	1,850	1,700	1,400	1,200	1,050	850	620
	Min-extended	kg	3,000	3,000	2,400	2,000	1,650	1,350	1,100	900	750	600	450

FOURTH STAGE EXTENDED 8.72 - 11.05M BOOM LENGTH

Working radius	m	up to 4.0	4.5	5.0	5.5	6.0	7.0	8.0	9.0	10.0	10.86	
Outrigger	Max-extended	kg	2,000	1,800	1,600	1,450	1,300	1,100	950	850	750	640
	Mid-extended	kg	2,000	1,800	1,600	1,450	1,300	1,050	700	600	450	390
	Min-extended	kg	2,000	1,800	1,600	1,350	1,100	750	500	400	300	250

FIFTH STAGE EXTENDED 11.05 - 13.38M BOOM LENGTH

Working radius	m	up to 5.0	5.5	6.0	7.0	8.0	9.0	10.0	11.0	12.0	13.19	
Outrigger	Max-extended	kg	1,000	920	850	700	600	550	500	450	400	350
	Mid-extended	kg	1,000	920	850	700	600	520	450	390	300	250
	Min-extended	kg	1,000	920	850	700	500	400	300	250	200	170

SIXTH STAGE EXTENDED 13.38 - 15.71M BOOM LENGTH

Working radius	m	up to 6.0	7.0	8.0	9.0	10.0	11.0	12.0	13.0	14.0	15.52	
Outrigger	Max-extended	kg	500	400	350	300	250	250	200	200	150	150
	Mid-extended	kg	500	400	350	300	250	250	200	200	150	150
	Min-extended	kg	500	400	350	300	250	230	200	170	150	100

SEARCHER HOOK SMALL - 500kg

Stowed position

In operation

Lifting capacity 500kg sections 1-5
280kg section 6

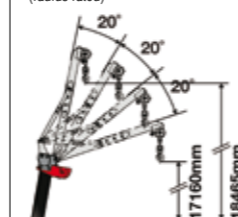
Length 800mm

Weight 20kg

Tilt angles 0°, 20°, 40°, 60°

SEARCHER HOOK

Maximum Load 350kg - 700kg (radius rated)



FLY JIB

Maximum Load 350kg - 700kg (angle rated)



DIMENSIONS

